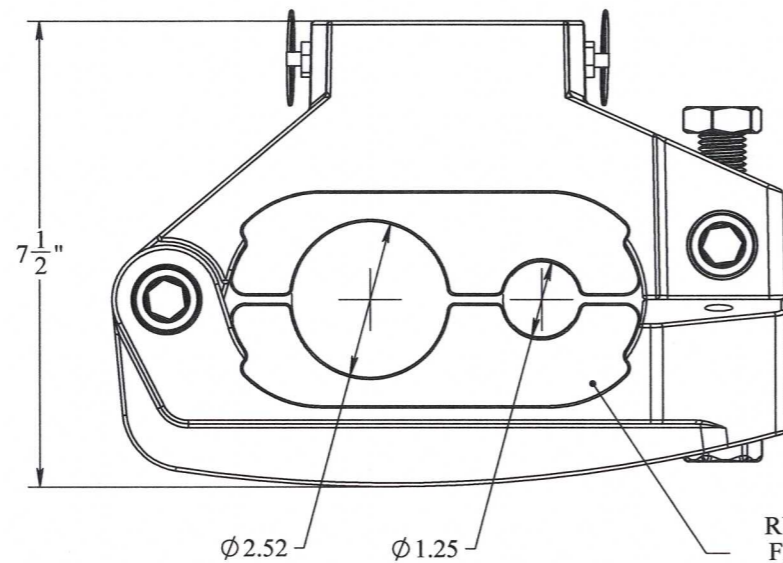
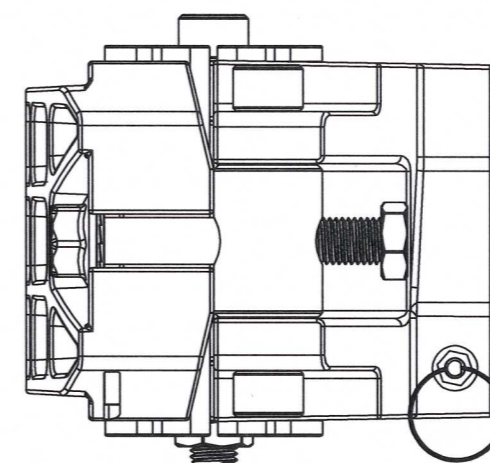
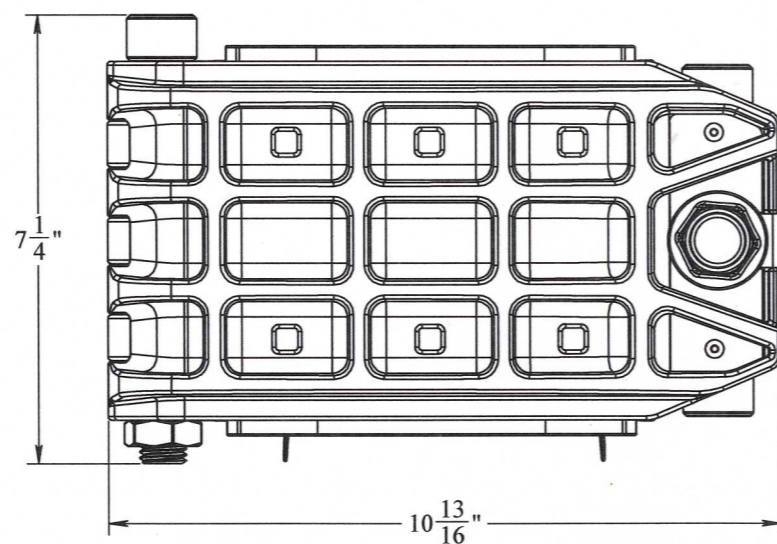


REVISIONS				
REV.	DESCRIPTION	ECO #	DATE	APPROVED
A1	RELEASE	2013-336	8/16/2013	GNB
A2	CHANGED UMBILICAL LINE FROM 2.56 TO 2.52	2013-363	9/9/2013	GNB



RUBBER INSERTS CAN BE FLIPPED FOR RIGHT AND LEFT HAND CONFIGURATIONS



NOTES:

- MATERIAL OF CONSTRUCTION:  
- GLASS FILLED COMPOSITE  
- 316 STAINLESS STEEL HARDWARE
- WEIGHT: 16.5 LBS.

**PROPRIETARY AND CONFIDENTIAL:**  
THE INFORMATION CONTAINED IN THIS DRAWING IS THE SOLE PROPERTY OF THE SUBSEA COMPANY INC. ANY REPRODUCTION IN PART OR AS A WHOLE WITHOUT THE WRITTEN PERMISSION OF THE SUBSEA COMPANY INC IS PROHIBITED.

3RD ANGLE PROJECTION:  
INTERPRET GEOMETRIC TOLERANCING PER: ASME Y14.5

WORKMANSHIP STANDARD PER WI 751-001

UNLESS OTHERWISE SPECIFIED: ALL DIMENSIONS ARE IN INCHES

WEIGHT: 16.68 lbs.

	NAME	DATE
DRAWN	GNB	9.9.13
CHECKED	GNB	9.9.13
Q.A.	GNB	9.9.13
MFG APPR.	GNB	9.9.13

SCALE: 1:8

THE SUBSEA COMPANY		THE SUBSEA COMPANY INC	
SIZE	B	TITLE	CLAMP, MUX, 2.52 UMBILICAL LINE, 1.25 MUX LINE
DWG. NO.	TSC-01186-GA	REV	A2
DO NOT SCALE DRAWING			SHEET 1 OF 1