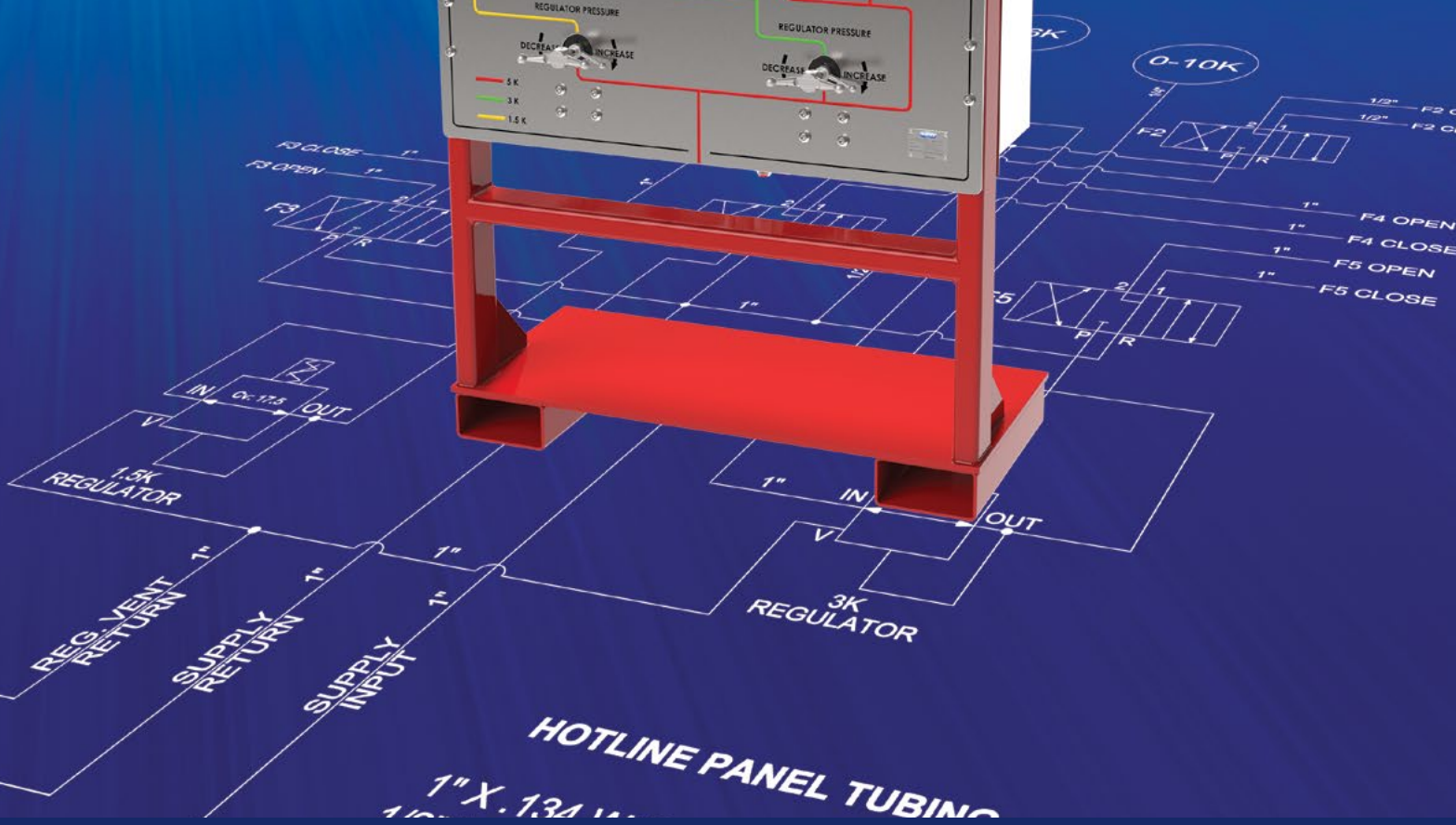
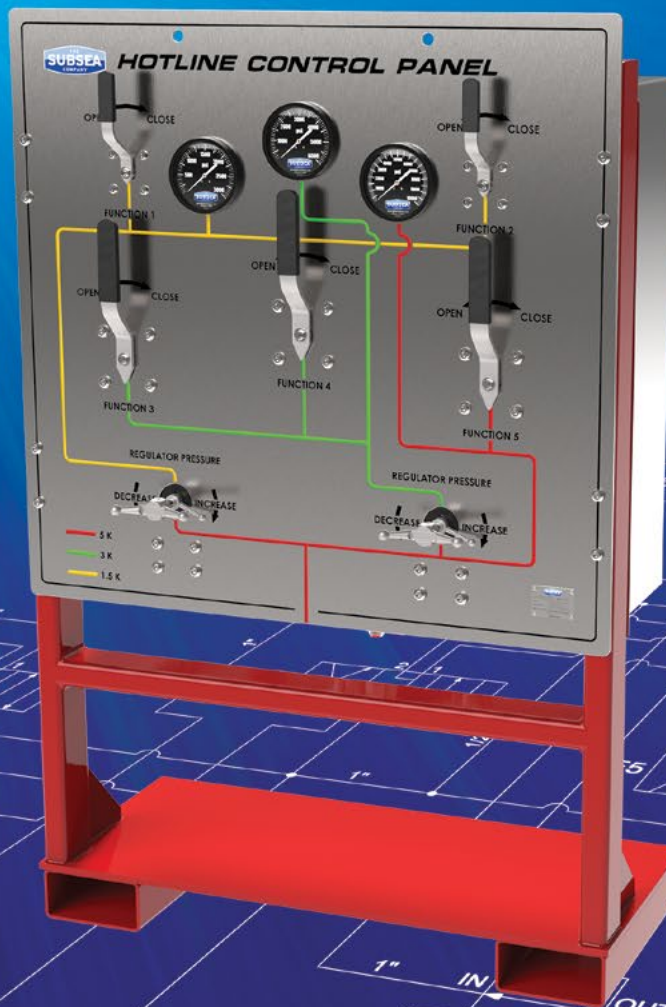


Hotline Control Panel



Robust, user-friendly design assures fast, safe and reliable testing.

Top of the line components and construction provide consistent results

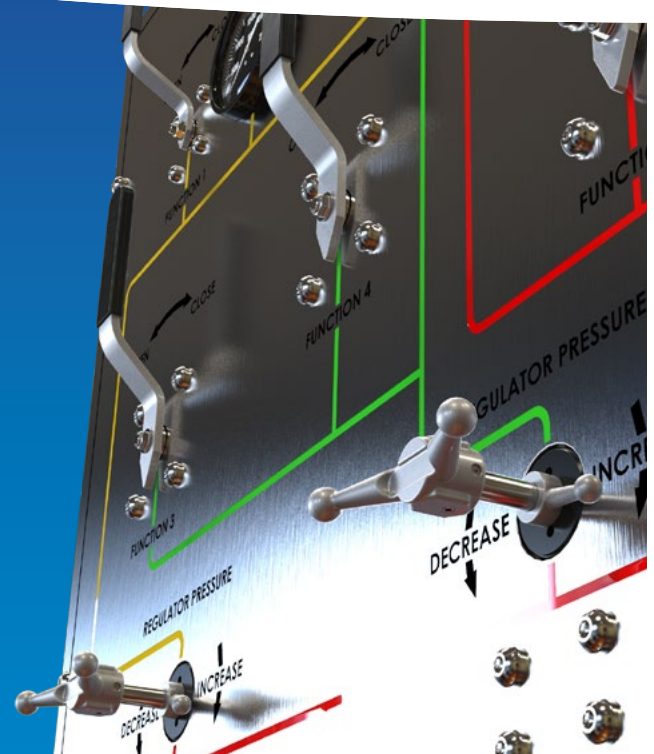
The Subsea Company Hotline Control Panel uses only name brand components and is engineered for a safe and reliable hydraulic testing. Our design is built for long-lasting durability and offers tremendous visual aids to make the process quick, easy and safe.



Key Features

- Compact rugged design
- Durable and easy to use
- 5,000 PSI rated
- (3) Independent Circuits
- (2) regulated; (1) inlet pressure
- High and low pressure & flow

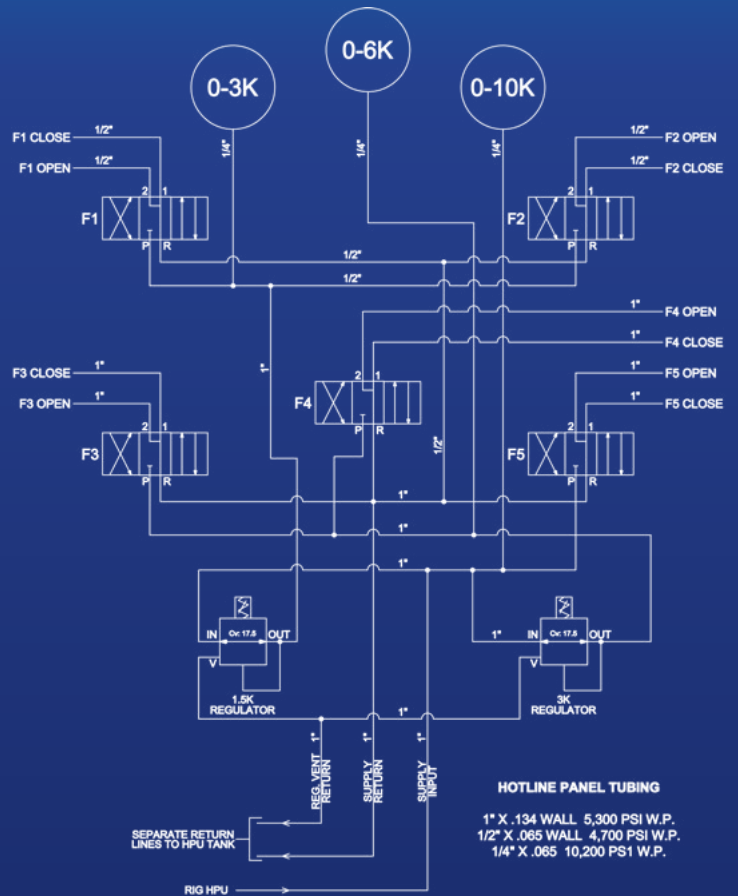
The Hotline Control Panel is designed to allow the user to test hydraulic components and systems utilizing available rig hydraulic sources up to 5,000 PSI. The rig's hydraulic power unit (HPU) feeds the Hotline Control Panel providing fluid to three hydraulic circuits for testing the second BOP stack, rams & annular or any other hydraulic component or equipment. The low pressure regulated circuit can be adjusted from 300-1,600 PSI and the medium pressure regulated circuit is adjustable from 500-3,300 PSI. The unregulated circuit is at full supply pressure. Test pressures and available hydraulic source pressure are viewed on Subsea certified pressure gauges.



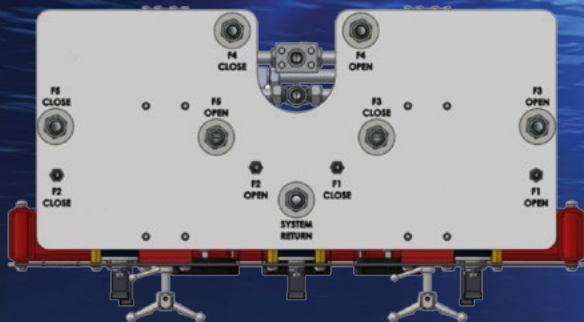
Product Selection Guide

Part Number	Description
TSC-00196	Hotline Control Panel - Complete System - 5K rated, 3 independent circuits, 2 regulated, 1 full inlet pressure, colored coded function diagram
Spare Parts & Repair Kits	
TSC-00196-SK	Seal kits for all valves & regulators
TSC-00196-RK	Repair kit for all valves & regulators
TSC-01564	1-1/2" Regulator 5k in 3k out
TSC-01564-SK	Seal kit, 1-1/2" regulator 5k in 3k out
TSC-01564-RK	Repair kit, 1-1/2" regulator 5k in 3k out
TSC-01563	1-1/2" Regulator 5k in 1.5K out
TSC-01563-SK	Seal kit, 1-1/2" regulator 5k in 1.5K out
TSC-01563-RK	Repair kit, 1-1/2" regulator 5k in 1.5K out
TSC-01562	1" Manipulator valve
TSC-01562-SK	Seal kit, 1" manipulator valve
TSC-01562-RK	Repair kit, 1" manipulator valve
TSC-01561	1/2" Manipulator valve
TSC-01561-SK	Seal kit, 1/2" manipulator valve
TSC-01561-RK	Repair kit, 1/2" manipulator valve

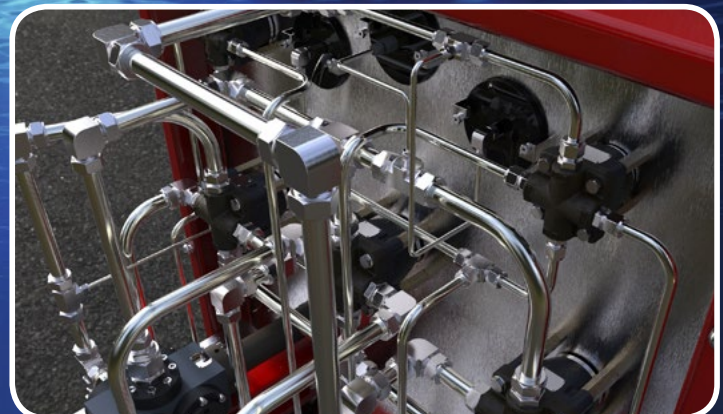
Hydraulic Circuit Diagram



Download technical documents at
www.thesubsea.com/resources



Bottom process connection plate





Innovating Tomorrow's Standards

Raising the bar with innovative solutions worth sharing, The Subsea Company has significant experience in developing equipment to minimize risk, solve downtime issues and improve subsea operations and safety.

Our mission is to develop, manufacture and provide reliable market driven subsea products, equipment, and systems used in the offshore drilling and production industry. We strive to help our customers become successful by delivering customized solutions, when they need it the most.